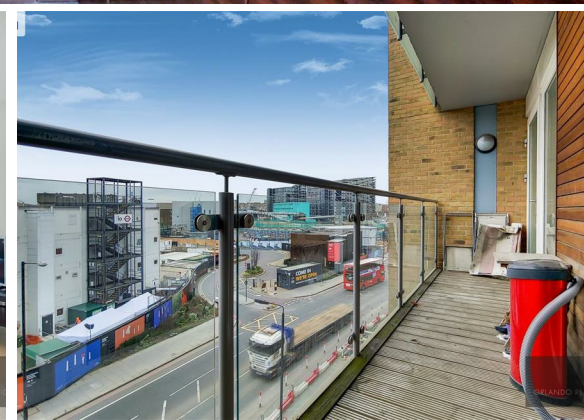




**1 Bed  
Apartment  
located in**

**£2,000 PCM**

ORLANDO REID



**ORLANDO REID**  
LONDON

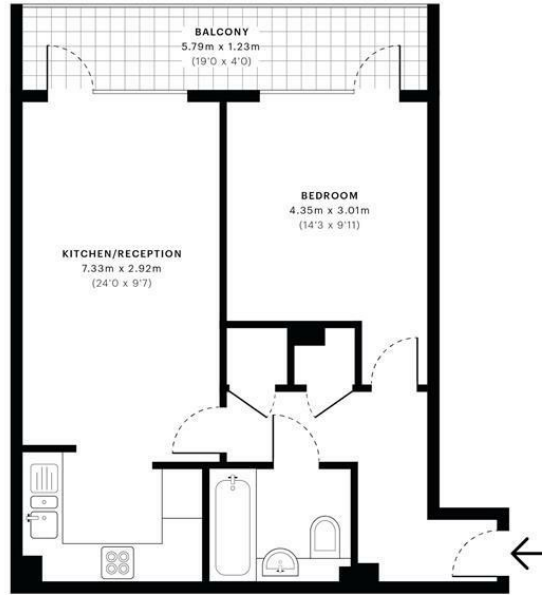


### Viridian Apartments, SW8

CAPTURE DATE  
04/02/2020

LASER SCAN POINTS  
25,085,418

GROSS INTERNAL AREA  
44.5 Sqm / 479.5 Sqft



— Fourth Floor

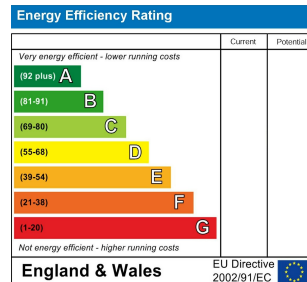
<b>GROSS INTERNAL AREA (GIA)</b> The footprint of the property. <b>44.5 Sqm / 479.5 Sqft</b>	<b>NET INTERNAL AREA (NIA)</b> Excludes walls and external features. Includes washrooms, restricted head. <b>42.7 Sqm / 460.0 Sqft</b>	<b>EXTERNAL STRUCTURAL FEATURES</b> Balconies, terraces, verandas etc. <b>7.1 Sqm / 76.7 Sqft</b>	<b>RESTRICTED HEAD HEIGHT</b> Limited use area under 1.9m <b>0.0 Sqm / 0.0 Sqft</b>
--	---	---	---



Spec floor plans are produced in accordance with the Royal Institution of Chartered Surveyors' Property Measurement Standards. Plots and gardens are illustrative only and are excluded from all area calculations. Due to rounding, numbers may not add up precisely. All measurements shown for the individual room heights and widths are the maximum points of measurements captured in the scan.

IPMS 3B RESIDENTIAL  
51.7 Sqm / 556.2 Sqft  
IPMS 3C RESIDENTIAL  
49.9 Sqm / 539.8 Sqft

SPEC ID  
5e341e4d44f9687b7b58fa10



## DIRECTIONS

### CONTACT

1-3 Old Town  
Clapham  
London  
SW4 0JT

E: [lettings@orlandoreid.co.uk](mailto:lettings@orlandoreid.co.uk)  
T: 020 7627 3197  
[www.orlandoreid.co.uk](http://www.orlandoreid.co.uk)

